

TLaunch: a launcher for a T_EX Live system

Siep Kroonenberg

June 29, 2017

This manual is for tlaunch, the T_EX Live Launcher, version 0.5.3.

Copyright © 2017 Siep Kroonenberg.

Copying and distribution of this file, with or without modification, are permitted in any medium without royalty provided the copyright notice and this notice are preserved. This file is offered as-is, without any warranty.

Contents

1	The launcher	5
1.1	Introduction	5
1.1.1	Localization	6
1.2	Modes	6
1.2.1	Normal mode	6
1.2.2	Initializing	6
1.2.3	Forgetting	6
1.3	Using scripts	7
1.4	The ini file	7
1.4.1	Location	7
1.4.2	Encoding	7
1.4.3	Syntax	7
1.4.4	The Strings section	9
1.4.5	Sections for filetype associations (FTAs)	9
1.4.6	Sections for utility scripts	10
1.4.7	The built-in functions	10
1.4.8	Menus and buttons	11
1.4.9	The General section	12
1.5	Editor choice	12
1.6	Launcher-based installations	13
1.6.1	The tlaunchmode script	14
1.6.2	TeX Live Manager	14
2	The launcher at the RUG	15
2.1	Historical	15
2.2	RES desktops	16
2.3	Components of the RUG TeX installation	16
2.4	Directory organization	17
2.5	Fixes for add-ons	17
2.5.1	TeXnicCenter	17
2.5.2	TeXstudio	18
2.5.3	SumatraPDF	18
2.5.4	LyX	18

2.6	Moving the XeTeX font cache	18
A	Windows issues	20
A.1	User and system	20
A.2	Roaming	20
A.3	Windows configuration	20
A.3.1	Registry locations	21
A.3.2	Filetype associations	21
A.3.3	Non-roaming filetype associations	22
A.3.4	UserChoice	22
A.3.5	Application registration	22
A.3.6	The searchpath and other environment variables	23
A.4	Windows Known Folders	23
A.4.1	Programs	24
A.4.2	Configuration- and data files	24
A.4.3	TeX Live choices	24

Chapter 1

The launcher

About this document

This manual documents the T_EX Live Launcher. The first chapter describes the launcher in general, its facilities, its ini file and its command-line parameters.

The second chapter describes the launcher-based installation at the RUG, or Rijksuniversiteit Groningen, as an example launcher-based installation.

Since many T_EX developers spend as little time as they can help in a Windows environment, I also added an appendix with Windows background information.

1.1 Introduction

I designed the T_EX Live launcher for the Windows T_EX Live installation on our university network, which contains T_EX Live itself plus several other T_EX-related applications. The launcher provides a single access point to all this software, and to related local and online resources.

The launcher also takes care of configuration: at first run, T_EX Live is added to the searchpath, and relevant filetype associations are set up.

This means that the launcher rather than the classic T_EX Live installer

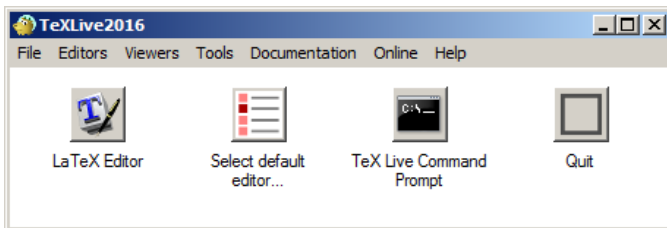


Figure 1.1: A possible Launcher window

takes care of Windows-specific configuration. Which is a good thing if the T_EX Live directory tree is on a shared network drive, or if a T_EX Live installation has to be copied to many workstations.

Filetypes, menus and buttons and pre- and post configuration scripts are defined in a standard Windows ini file. The format of this file is described in section 1.4 of this chapter. The supplied ini file provides something more or less equivalent to a classic Windows T_EX Live installation.

1.1.1 Localization

Although at the moment the launcher lacks proper support for localization, most of the user interface strings are defined in the ini file and can be replaced with strings in other languages.

1.2 Modes

1.2.1 Normal mode

In a normal run, the launcher displays a window with a menu or a series of buttons or both, see figure 1.1. For anything launched via these controls, T_EX Live is prepended to its process searchpath irrespective of the system- or user searchpath; see Appendix A.3.6 on Windows searchpath handling.

1.2.2 Initializing

On first run, `tlaunch` creates file associations and prepends T_EX Live to the user searchpath, see appendix A.3.6. Such configuration allows users to start up their L^AT_EX editor by double-clicking a L^AT_EX file in their file manager, bypassing the launcher altogether.

On first run, the launcher also creates a renamed copy of itself and a renamed modified copy of the configuration file to a directory inside the user's profile. This pair of copies serves as *forgetter*, see below. `tlaunch` registers this *forgetter* as an uninstaller under Windows.

1.2.3 Forgetting

Since a network- or multi-user T_EX Live installation can be uninstalled by others, it is desirable that the configuration done on first run can be reversed without the presence of the original T_EX Live. The *forgetter* takes care of this.

The launcher detects from its location whether it should run normally or as *forgetter*.

It is also possible to undo configuration from within a normal run if the ini file defines a button- or menu control for it.

1.3 Using scripts

External scripts may run on demand, as the action associated with a button or a menu control; see section 1.4.6. Scripts may also run automatically, as supplemental initialization or cleanup; see the `pre_config`, `post_config` and `pre_forget` variables in table 1.1. Examples:

- Forgetting a previous release of T_EX Live before configuring the current one. This only makes sense for a centrally-managed T_EX installation, where it is known what T_EX installation came before.
- Giving T_EXworks some spelling dictionaries
- Writing configuration data for non-T_EX Live components
- Adjusting XeT_EX font configuration, see Section 2.6

1.4 The ini file

The ini file defines the menu items and buttons of the graphical interface. These controls can start up GUI programs or run utility scripts, or run some predefined functions. The ini file also defines filetype associations, and may specify scripts for doing additional configuration and cleanup.

1.4.1 Location

In T_EX Live, the binary is in the T_EX Live binary directory, `tlroot/bin/win32`, and the ini file is in `tlroot/texmf-dist/web2c`. The installer may have created a modified higher-priority copy in `tlroot/texmf-var/web2c`. A custom `tlaunch.ini` in `tlroot/texmf-config/web2c` will override either. In this case, the filename database should be updated.

Another option is to place both the binary and the ini file in the root of the T_EX Live installation.

1.4.2 Encoding

The launcher tries to guess the encoding used, and accepts ASCII, UTF-8 and Windows' UTF-16, with or without BOM. If all else fails, it tries ANSI with the system default code page.

1.4.3 Syntax

The ini file is a regular Windows ini file with sections, definitions and comment lines.

	DEFAULT	MEANING
tlroot	predefined	root of the T _E X Live installation
version	predefined	release year
tlperl	predefined	path of the built-in Perl binary
tlwperl	predefined	same for the GUI Perl binary
java	predefined	Java binary, if found
tlconfig	required	directory for the launcher's user data, see e.g. sections 1.4.4 and Appendix A.4.2
tlname	TeX Live %version%	used for e.g. window title and uninstaller 'DisplayName'
customed_progid	TL.customed	Filetype for external, user-selected editor, see section 1.4.5
pre_config	empty	optional program or script to be run before first-time initialization
post_config	empty	optional program or script to be run after first-time initialization
pre_forget	empty	optional program or script to be run before undoing initialization
announce	empty	optional text to display

Note. All process environment variables, e.g. %appdata%, are accessible while the launcher parses the ini file. Variable names are case-insensitive.

Table 1.1: Strings with a special meaning in the ini file

- A section starts with a line containing the section name enclosed in square brackets '[' and ']'. It ends at the start of the next section or at the end of the file.
- A definition line consists of a line *key=value*.
- A comment line starts with ';'.

The ini file is processed in one go, which means that everything must be defined before it is used. The ordering of the list below of possible sections satisfies this requirement.

However, it is not necessary that everything that is referred to actually exists; if a menu- or button control refers to a non-existent file, the control is quietly left out, and if the COMMAND of a filetype refers to a non-existent file then neither the filetype registry entry nor any control for it will be created.

The ini file can contain the following sections:

1.4.4 The Strings section

In this section arbitrary strings can be defined to be used later during parsing. The names of the string variables are case-insensitive, their values are not. Various strings have a special meaning, see Table 1.1. Their values may be predefined, *i.e.* they are set by the launcher before processing the ini file; they may be required, or they are allowed to stay empty.

At a minimum, the TLCONFIG string should be defined in the ini file. This is the directory for launcher user files such as the forgetter. A few suggestions:

- %UserProfile%\texlive%version%\tlaunch, *i.e.* under the common root of %TEXMFVAR% and %TEXMFCONFIG%
- %appdata%\tlaunch\%version%; see Appendix A.4.2
- or maybe %localappdata%\tlaunch\%version% if T_EX Live is installed on the local system

1.4.5 Sections for filetype associations (FTAs)

In Windows, an extension is associated with a filetype and a filetype is associated with a program. An extension can also have alternate filetypes associated with it, which may show up if you right-click a file and select 'Open with...'. More on filetypes in appendix A.3.2.

A filetype section has as name the string 'FT:' followed by the filetype name. An example of a filetype section:

```
[FT:TL.TeXworks.edit.%VERSION%]
COMMAND="%tlroot%\bin\win32\TeXworks.exe"
;SHELL_CMD="%tlroot%\bin\win32\TeXworks.exe" "%1"
;ICON="%tlroot%\bin\win32\TeXworks.exe,0"
;NAME=TeXworks
EXTENSIONS=.tex .cls .sty
;PRIMARY=1
;PATH_PREFIX=0
```

The commented lines are optional and represent default values.

COMMAND is the command to start the program.

SHELL_CMD is the command to open a file. The default is COMMAND with ' "%1"' appended.

ICON is the icon to be used in GUI file managers. The default is COMMAND with ',0' appended, without a space. If there is no such icon then a fall-back icon will be used; see *e.g.* the right-most icon in Figure 1.1.

NAME is only used for L^AT_EX editors, in the editor-selection window, see section 1.5. If not specified, it will be derived from the program filename.

EXTENSIONS is the list of extensions that should have the filetype as primary or secondary association.

PRIMARY is default 1. If set to 0, then the program only shows up in the Open with... dialog. Mainly of interest for the bitmap2eps utility. See appendix A.3.2 on primary and secondary filetypes.

PATH_PREFIX is default 0. If set to 1, Windows will prepend T_EX Live to the program's searchpath. The launcher will only do this if **COMMAND** is a bare or quoted filename, without options or parameters; see Appendix A.3.5.

1.4.6 Sections for utility scripts

A batchfile or command-line program can be declared in a utility-script section. If a button or menu item invokes such a script, standard output is intercepted and displayed in a dialog box when the script has completed. Standard error is also captured, but shows up only in the log file %TEMP%\TeXLive_Launcher.log. A splash text is displayed while the script is running. The default value for the splash text is 'Working...'. An example adapted from the rug installation:

```
[SC:TNC_config]
command=cscript "%TLROOT%\rugscripts\tnc_config.vbs" "%troot%"
;splash=Reconfiguring TeXnicCenter...
```

In this example, the script takes just a moment, so there is no point in defining a splash text.

1.4.7 The built-in functions

The following functions are available:

FU:quit Terminate the launcher

FU:clear Undo all configuration and terminate

FU:initialize Undo all configuration, terminate and restart. This forces re-initialization.

FU:editor_select See section 1.5

FU:default_editor See section 1.5

FU:about An About box

FU:uninst_all See section 1.6

FU:uninst See section 1.6

1.4.8 Menus and buttons

The visible interface of the launcher consists of an optional menu with drop-down submenus and an optional row of buttons. There should be at least one button or one submenu with one entry.

A submenu is defined in a section with name ‘MN:’ followed by the submenu name, and the row of buttons is defined in a section named ‘BUTTONS’. A button- or a menu item has as key the string to be displayed and as value one of the following:

- A filetype. This invokes its COMMAND.
- A utility script. This also invokes its COMMAND.
- ‘SO:’ (Shell Open) followed by a document or URL. The document or url will be opened in its default program.
- A predefined function, see section 1.4.7.
- An arbitrary command.

In a submenu section, a sole ‘=’ will produce a separator line. In the button section, it will do nothing.

Example buttons- and submenu sections:

```
[MN:Tools]
Editor choice=FU:editor_select
TeX Live Command Prompt=%comspec% /T "TeX Live" /e:on
=
(Re)configure TeXnicCenter=SC:TNC_config

[MN:Documentation]
All TeX Live documentation by package=SO:%tlroot%\doc.html
TeX and LaTeX Q & A=SO:http://tex.stackexchange.com/

[BUTTONS]
LaTeX Editor=FU:default_editor
PostScript Viewer=FT:TL.PSView.view.%VERSION%
Quit=FU:quit
```

1.4.9 The General section

This section is optional. Four keywords are allowed, of which the first two correspond to T_EX Live installer options:

Filetypes Allowed values are

- **none**: do not set or change filetype associations
- **new**: create filetype associations only if they do not override existing ones; default
- **overwrite**: create filetype associations regardless of existing ones

searchpath Allowed values are 0 (leave searchpath alone) and 1 (add T_EX Live to the searchpath; default). See appendix A.3.6. In any case, when a program is started from the launcher it will have T_EX Live prepended to its process searchpath.

remember Allowed values are 0 (do nothing) and 1 (arrange that T_EX-related filetype associations are restored on login). This may be desirable in a Roaming Profiles setup, see sections A.2 and A.3.3.

keeptemps Allowed values are 0 (delete temporary files; default) and 1 (keep them). This is a debug option for running external scripts. In most cases however, the contents of the temporary files are copied to the log file %TEMP%\TeXLive_Launcher.log anyway.

An example general section:

```
[General]
FILETYPES=new
SEARCHPATH=1
KEEPTEMPS=0
```

The above values are the defaults.

1.5 Editor choice

If a filetype has `.tex` among its supported extensions, the launcher considers it an editor. On initialization, the first one becomes the default, unless `PRIMARY` is set to 0 and there is another candidate with `PRIMARY` 1. If in the General section `FILETYPES` is set to `none` or `new`, then an existing file association for `.tex` files will not be overwritten.

The function `FU:default_editor` invokes the default editor if there is one. The function `FU:editor_select` invokes a dialog for selecting a default editor; the options are the ones defined in the ini file, the current default and selecting one via a file browser dialog, see figure 1.2.

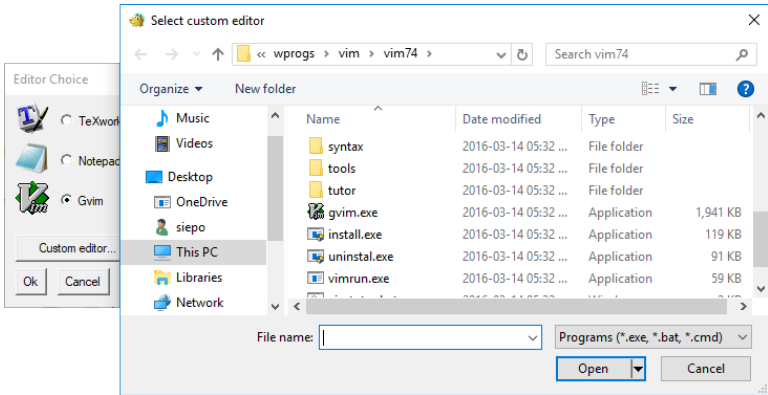


Figure 1.2: Editor selection with a file browser for a custom editor

If the new editor is selected via the file browser, it will be assigned to the filetype `TL.customed` and this filetype will become the default for `.tex` files. It is possible to configure another filetype string in the ini file, e.g. one which includes the `%VERSION%` string.

Appendix A.3.4 explains why a `.tex` file might still get opened in another editor.

1.6 Launcher-based installations

It seems possible to do away with much of the Windows-specific code of the current installer. To this end, I added install and uninstall options to the launcher. Installation merely means creating a Start menu entry for itself and to register itself as uninstaller.

In installation mode, it is assumed that the launcher and its ini file are already in place as part of the regular \TeX Live installation.

The launcher can be invoked with the following command-line parameters:

`user_inst` Install the launcher for a single user. This includes doing the first-time initialization as in a regular invocation.

`admin_inst` Install the launcher for all users

`uninst` Undo installation but leave the \TeX Live directory tree alone. Also runs the forgetter for the current user silently, if it exists.

`uninst_all` Undo installation and remove the \TeX Live directory tree. Also runs the forgetter for the current user silently, if it exists. This is the only option of these four which touches the \TeX Live installation itself.

`remember` Recreate filetype associations, see sections A.2 and A.3.3.

`silent` Do not ask for confirmation and do not pop up messages. Output is still written to the log file, at `%TEMP%\TeXLive_Launcher.log`.

The `user_inst_silent` and `admin_inst_silent` are also still available.

The non-silent uninstall options both ask which of the two uninstall options is desired. the only difference between them is which button is the default.

The new launcher mode option of the 2017 T_EX Live installer invokes the launcher with one of the silent installer options.

Within the launcher, there are functions `FU:uninst_all` and `FU:uninst` which can be assigned to a menu- or button control. If necessary, the launcher will pop up a UAC prompt and restart in elevated mode.

The T_EX Live installer may create a higher-priority `tlaunch.ini` if for either the path setting option or the file associations option a non-default value was selected. This will happen even if launcher mode was not selected.

1.6.1 The `tlaunchmode` script

The included Perl script `tlaunchmode` can convert a local T_EX Live installation between classic and launcher-based. Run with a parameter 'on', the script turns launcher mode on; with 'off' it reverts the installation to classic, and anything else prints a brief help message. It is already part of T_EX Live.

It aborts if admin permissions are required but missing.

1.6.2 T_EX Live Manager

Nothing special has been done for the T_EX Live Manager. It can be assigned to a menu- or button control, although this makes little sense for a centrally managed network installation. If necessary it will automatically pop up a UAC prompt.

Chapter 2

The launcher at the Rijksuniversiteit Groningen

This chapter deals with the launcher-based $\text{T}_{\text{E}}\text{X}$ Live installation at the RUG (Rijksuniversiteit Groningen) and the environment in which it operates.

Our $\text{T}_{\text{E}}\text{X}$ Live installation resides on the network. The $\text{T}_{\text{E}}\text{X}$ Live Launcher is available via a centrally managed start menu. From any Windows workstation connected to the network, one can click the launcher shortcut in this menu and start using $\text{T}_{\text{E}}\text{X}$.

The files in the `tlrug.zip` zipfile are tidied up versions of those of the RUG installation; they omit some ugly workarounds for specific local problems and also benefit from hindsight.

2.1 Historical

An earlier solution for $\text{T}_{\text{E}}\text{X}$ Live was implemented with a patchwork of scripts in various languages. An initialization script created filetype associations, Start Menu shortcuts and modified the searchpath. It made use of the built-in Perl and its $\text{T}_{\text{E}}\text{X}$ Live modules.

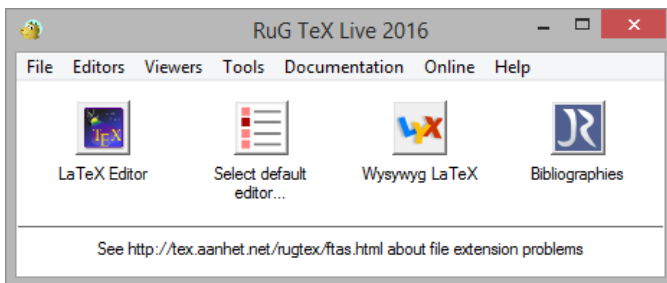


Figure 2.1: The launcher at the Rijksuniversiteit Groningen

When between 2013 to 2014 the university transitioned to centrally managed desktops, using the RES workspace management system¹, I created the launcher. Because previously users might run the initializer / installer when they really want to run the already initialized / installed T_EX Live, I opted this time for a launcher that configures itself automatically, without requiring a separate initialization step.

For speed of development, a first version was written in the AutoIT² scripting language. AutoIT has good access to Windows' internals, and comes with a utility which packages a script with a AutoIT runtime into a self-contained executable. The AutoIT versions did not use an ini file; everything was coded into the script itself.

For the 2015 T_EX Live release, I finally had a usable C version, in which all configuration was read from an ini file.

2.2 RES desktops

The RES system synthesizes a desktop or workspace for the user on logon. Personal settings are selectively captured, stored in a database and restored on re-logon; the settings part of RES can be considered an alternative implementation of the roaming profiles described in Appendix A.2.

This desktop is also available remotely, which works reasonably well most of the time.

For T_EX Live, I submit a wish list of settings to be captured to the workspace management people, and they enter everything into the RES system. Unfortunately, the RES system has its quirks, and what I expect to happen is not always what actually does happen. Some of these problems are mentioned later on.

2.3 Components of the RUG T_EX installation

Various third-party programs are incorporated into our T_EX Live installation. Below are some details.

Most T_EX-related software does not have deep hooks into the system. Even if applications require elevated permissions to install, usually they can simply be copied to another location and work fine from there. This is the case with *e.g.* T_EX Live itself and with TeXstudio.

The add-ons are:

- Additional editors: TeXnicCenter and TeXstudio
- The pdf viewer SumatraPDF

¹Real Enterprise Solutions, <https://res.com/>

²<https://www.autoitscript.com/>

- The Java-based bibliography manager JabRef
- The epspdf GUI with bundled single-file Tcl/Tk runtime
- The pseudo-wysywyg LyX L^AT_EX editor

There are also controls for:

- browsing the T_EX Live installation
- a command-prompt with T_EX Live as the first directory on the search-path
- some manuals from the T_EX Live installation
- links to T_EX-related websites

Such menu items are simply created by single lines in the ini file.

There are no controls for the T_EX Live manager or for uninstalling.

Figure 2.1 shows buttons for some of the additional software. Along the bottom of the window is an announcement text, which is an optional string item in the ini file. The Help menu item opens a help text in the configured default text editor – probably Notepad.

2.4 Directory organization

There is a directory under the T_EX Live root containing all the extras. There is another subdirectory for the various scripts. All paths in both the ini file and the scripts are relative to the root of the installation.

I placed both the binary and the ini file in the root of the installation, but did not place anything into existing T_EX Live subdirectories.

2.5 Fixes for add-ons

Some of the add-ons needed a bit more work than just copying the installed program directory to its place under the T_EX Live root:

2.5.1 TeXnicCenter

The original university installation was based on MikTeX, with TeXnicCenter as editor. In 2008 I replaced MikTeX with T_EX Live, and TeXnicCenter with the more up to date TeXstudio editor. Since I did not want to force anyone to switch editors, I also kept TeXnicCenter around.

While TeXnicCenter can autoconfigure itself nicely for MikTeX, it asks T_EX Live users a series of questions about what is where. Since many users do not know their way around outside their home directory, I wrote a vb-script which emulates the MiKTeX autoconfiguration for T_EX Live and spares the user awkward questions.

2.5.2 TeXstudio

TeXstudio autoconfigures itself fine, but there were still two problems:

1. By default, it checks whether there is a more recent version, while users are not in a position to do an update themselves.
2. With our current desktop management software, programs do not get the user searchpath appended to their process searchpath.

The first problem is solved during first-time initialization of the launcher. If there is no TeXstudio configuration file, then one is created with just the setting not to check for updates. If there is one, the update check option is edited to be off. Either way, there is no impact on other settings.

A possible solution for the second problem is described in Appendix A.3.5, but I opted instead to start TeXstudio via a small wrapper program.

Note that the T_EX Live runsript wrapper does already take care of the searchpath for TeXworks, Dviout and PSV[iew].

2.5.3 SumatraPDF

In the absence of any registry settings, SumatraPDF assumes that it is a portable setup, and tries to write user configuration to its own directory. Following advice from its developers, I created a registry setting to tell SumatraPDF otherwise, and let it write its configuration data to the user's profile.

Checks for updates are disabled in a similar way as for TeXstudio.

2.5.4 LyX

On first start, LyX can take several minutes to take stock of its environment and figure out what it can use. During this time, it is not even clear that anything is happening.

To prevent this delay, the post-config script copies a pre-generated configuration directory to the user's profile.

In the LyX installation itself, in the file *lyxroot*\Resources\lyxrc.dist, the setting `\path_prefix` has been rephrased to only contain paths relative to `$LyXDir`, which is the root of the LyX installation.

2.6 Moving the XeT_EX font cache

The default location of the XeT_EX font cache in T_EX Live is `$TEXMFYSVAR/fonts/cache`, i.e. `tlroot/texmf-var/fonts/cache`. In a multi-user or network install, this location is not user-writable. Since this may be a problem,³ a line

³E.g. if the set of Windows fonts changes, XeT_EX will try to update the font cache but will not be able to save the updated cache.

```
FC_CACHEDIR = $TEXMFVAR/fonts/cache
```

in the file `tlroot/texmf.cnf` will move the cache to a user-writable location. The `tllaunchmode` script, see section 1.6.1, will take care of this automatically.

Since I generate the T_EX Live installation on a Linux system, the configured T_EX Live font paths in `$TEXMFSYSVAR/fonts/conf/fonts.conf` do not match the target installation. Of course this generated file can be hand-edited, but I preferred to leave this file alone and move the font cache configuration files also to a user-writable location with another line:

```
FONTCONFIG_PATH = $TEXMFVAR/fonts/conf
```

in `tlroot/texmf.cnf`. A per-user font configuration is then created by a line

```
"%TLROOT%\tlpkg\tlperl\bin\perl.exe"  
"%TLROOT%\tlpkg\tlpostcode\xetex.pl"  
install "%TLROOT%" skip_gen 2>NUL
```

(one line) in a post-config script, see section 1.3.

The last parameter, *viz.* `skip_gen`, suppresses actual cache generation, since that might take quite some time and only benefit XeT_EX users. Any non-null value would have had the same effect.

Appendix A

Windows issues

A.1 User and system

Microsoft has wised up a lot security-wise. When Windows XP appeared, the line of Windows 9x windowses made place for slightly crippled versions of the NT-based professional editions. Even for Home editions there is now a separation between per-user and system-wide settings and files. Since Windows Vista, this separation is much more strictly enforced, and even administrators have to take an extra step, such as clicking yes to a UAC¹ prompt, before they can do anything deemed risky.

A.2 Roaming

On a Windows domain network, it can be arranged that users have more or less the same desktop, whatever computer within the network they happen to be working on. This is accomplished by either ‘folder redirection’, *i.e.* defining network locations for certain dedicated directories (see ‘Known Folders’ in Appendix A.4), or by copying user data back and forth between workstation and network on logoff and logon. There may also be a dedicated network share for user documents which is accessible from any computer, and which may do double duty as home to redirected folders.

A.3 Windows configuration

Some Windows configuration can only be stored in the registry, in particular file associations, see section A.3.2 below, and environment variables, including the searchpath.

Other configuration can be stored either in the registry or in configuration files, at the discretion of the developer.

¹User Account Control

A.3.1 Registry locations

We have to deal with three locations or hives within the registry:

- `HKEY_CURRENT_USER`, or `HKCU` in short, for user-specific settings
- `HKEY_LOCAL_MACHINE`, or `HKLM` in short, for system-level settings
- A third hive, `HKEY_CLASSES_ROOT`, or `HKCR`, will be described in the next subsection.

A.3.2 Filetype associations

The basic idea is that an extension has a default filetype or ProgID, and this filetype in its turn can define commands such as open, edit, view or print. For example, the extension `.jar` has as its filetype or ProgID `jarfile`, and for the ProgID `jarfile` the open command is defined as *e.g.*

```
"C:\Program Files (x86)\Java\jre1.8.0_45\bin\javaw.exe" -jar "%1" %*
```

Extensions can also have secondary file associations. These are the ones showing up when right-clicking a file and selecting ‘Open with...’.

Filetype associations exist in per-user and system-wide flavors:

- User-specific filetype associations are stored in `HKCU\Software\Classes`
- System-level filetype associations are stored in `HKLM\Software\Classes`
- The effective filetype associations are stored in `HKEY_CLASSES_ROOT` or `HKCR`, which is a runtime merge of the above two branches. Settings in `HKCU` override corresponding settings in `HKLM`.

For example, the link from `.jar` to `jarfile` is can be read from the `HKCR\.jar` key and the link from `jarfile` to actual commands from the `HKCR\jarfile` key.²

Secondary filetype associations can be stored in a subkey of the extension subkey, either the `OpenWithList` (obsolete) or the `OpenWithProgIds` subkey.

²In some situations, reading from `HKCR` proved not entirely reliable. Therefore, `TEX Live` always explicitly checks first `HKCU` and if necessary `HKLM`.

A.3.3 Non-roaming filetype associations

Unfortunately, these filetype associations do not roam. With the RES desktop management system at our university, this is no longer a problem for us. For other setups, the launcher contains a workaround which is activated by the `remember ini` file setting, see section 1.4.9.

When this is set to 1, the launcher will during first-time initialization place a shortcut to the forgetter in the Start / All Programs / Startup menu, with a 'remember' parameter added. This will cause the forgetter to run automatically at logon with a remember parameter. With this parameter, it will just silently recreate the filetype associations and then terminate.

A.3.4 UserChoice

Apart from the registry settings under the two `\Software\Classes` keys, choices made by the user in the 'Open with...' dialog are stored under subkeys of `HKCU\Software\Microsoft\Windows\CurrentVersion\Explorer\FileExts\ .ext`, the exact subkey(s) depending on the Windows version. Such entries should have priority over the ones described above, and do roam.

Windows 8 and later may pop up a dialog asking with what program to open a file even if there is already an answer in a `Software\Classes` key. The answer will be a preference stored under the `FileExts` key mentioned above. This should alleviate the problem of non-roaming filetype associations.

The launcher will not touch these registry entries.

A.3.5 Application registration

An application which is registered may have a better chance to be listed as an alternative in the 'Open with...' dialog.

The currently recommended way to register an application is under the `SOFTWARE\Microsoft\Windows\CurrentVersion\App Paths\ basename` key (*basename* including `.exe` file extension). The default entry of such a key is the full path of the file. Therefore, only one file with a given *base-name* can have such a registration entry.

The other entry of interest under this key is 'Path', which is a search-path fragment that should be prepended to the regular searchpath, just for this program. This prefixing happens if the program is opened by Windows Explorer. The path prefix is ignored if the program is started from the command-line or from the launcher.

For filetypes defined in the launcher ini file, the launcher creates an application registration key for the associated program, but only if the `COMMAND` field is just a filename or -path, with or without quotes.

Applications can also be registered under `HKCR\Applications\basename`, but here is no option to set a searchpath prefix. Microsoft considers this location obsolete.

A.3.6 The searchpath and other environment variables

Environment variables are also stored in the registry: per-user variables in `HKCU\software\environment`, system environment variables in `HKLM\System\CurrentControlSet\Control\Session Manager\Environment`.

For the searchpath, the effective searchpath consists of the system `%Path%` variable, with the user `%Path%` variable *appended* if it exists, with an intervening ‘;’ of course. Therefore, *directories on the system searchpath have priority over the user searchpath*.

Other environment variables from these registry locations behave as expected: the user version has priority if both exist. Note that the names of environment variables are case-insensitive.

Various pieces of system information, such as `COMPUTERNAME` and `CommonProgramFiles`, are not explicitly stored as environment variables, but are nevertheless available as such.

A.4 Windows Known Folders

Windows has an elaborate and ever expanding system of ‘Known Folders’: e.g. Program Files, ProgramData, User Profile (HOME directory), Start Menu, Desktop, Documents, Downloads, History, SendTo, Templates, Administrative Tools, Pictures, Music, Videos, Account Pictures, Cookies, Favorites, and dozens more, many of them both in a system- and a user version.

Sometimes a known folder is not a real folder but a virtual one, and for some known folders, 64-bits applications and 32-bits applications view things differently.

There are APIs which associate known folder identifiers to actual directory paths.

With Windows Vista a new API has been introduced, and the old one declared obsolete. One change for the better: the directory name ‘Documents and Settings’ has been replaced with simply ‘Users’.

This API also gives access to other properties, such as the localized names shown in Windows Explorer, such as ‘Programme’ instead of ‘Program Files’, or ‘Gebruikers’ instead of ‘Users’.

Microsoft recommends to avoid hard-coded paths, and to place everything under known folders instead. One benefit is at least that files in known folders have a better chance of surviving system upgrades.

A.4.1 Programs

The directory reserved for programs is normally `c:\Program Files`. On 64-bit systems, this directory is reserved for 64-bits programs, and `c:\Program Files (x86)` for 32-bits programs. Directories under one of the Program Files folders are automatically write-protected.

A.4.2 Configuration- and data files

There are also preferred locations for per-user- and system-wide program data. For Windows Vista and later these are:

- For user-specific settings, typical locations are `%appdata%`, which is usually `%userprofile%\%appdata%\roaming`, and `%localappdata%`, which is usually `%userprofile%\%appdata%\local`. For a networked workstation, `%appdata%` may be relocated or backed up to a location on the network, and be available to the user on any workstation.
- For system-wide settings there is `%ProgramData%`, usually `C:\ProgramData`.

On Windows Vista and later, these directories normally do *not* have spaces in their path. They are by default also hidden.

A.4.3 T_EX Live choices

It is clear that T_EX Live does not try very hard to conform to all Microsoft's recommendations, and I do not think that it should. A couple of obvious advantages of the existing default path `C:\texlive\yyyy`³ are the absence of spaces, and the locale-independence of the path seen in Windows Explorer.

In this default location, T_EX Live will not be write-protected automatically. For a system-wide installation, the T_EX Live installer itself will take care of this.

As to user files, it should be ok to put `$TEXMFCONFIG`, `$TEXMFVAR` and `tlaunch's %TLCONFIG%` under `%appdata%` or `%localappdata%`. For the first two, this could also be done after the fact with a couple of lines in `tlroot/texmf.cnf`, e.g.:

```
TEXMFVAR = $APPDATA/texlive2017/texmf-var
TEXMFCONFIG = $APPDATA/texlive2017/texmf-config
```

There they will be hidden, but most users will never interact directly with files in these directories anyway.

³Regular users can create directories in the root directory of the C:-drive, even though they cannot create regular files there.